

PART OF THE SE 1/4, SEC. 16, T.5N., R.1W., S.L.B. & M.

415

PARKVIEW SUBDIVISION

IN SOUTH OGDEN CITY

TAXING UNIT: 27

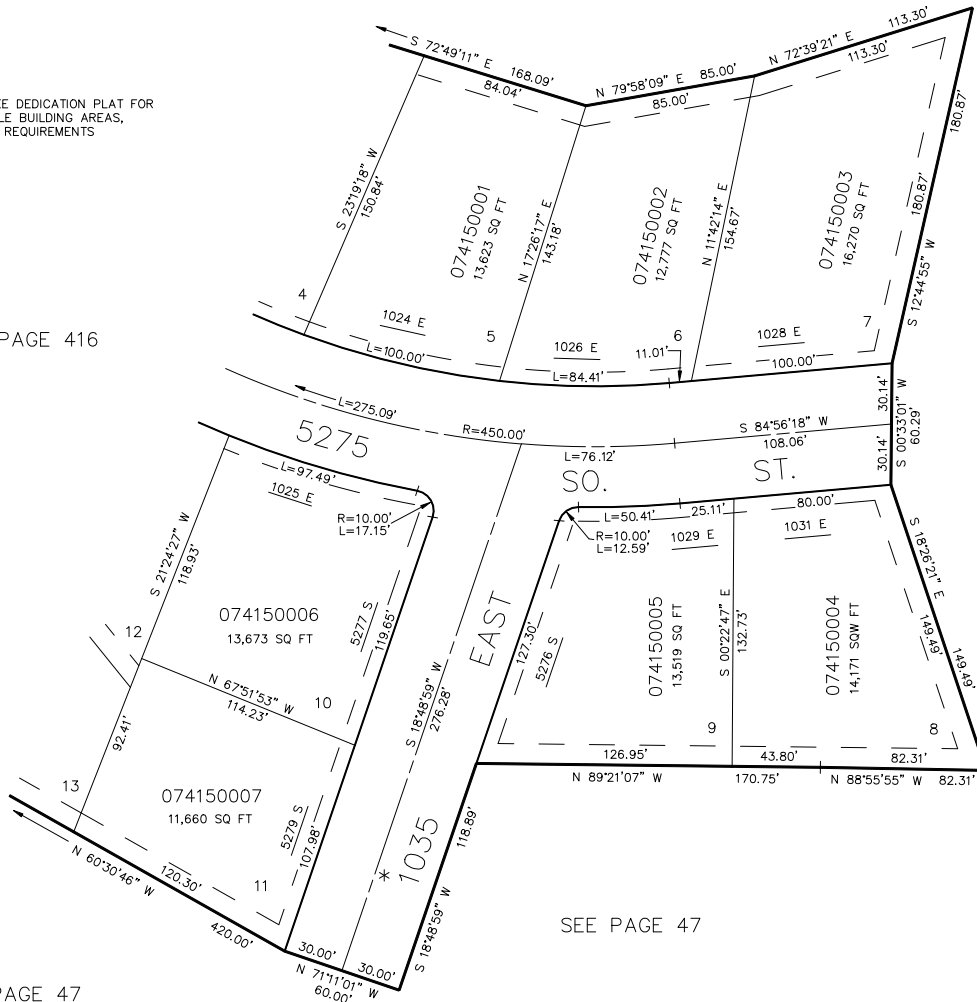
SCALE 1" = 50'

SEE PAGE 47

NOTE: SEE DEDICATION PLAT FOR
ALLOWABLE BUILDING AREAS,
SETBACK REQUIREMENTS

SEE PAGE 416

SEE PAGE 47



SEE PAGE 47

SEE PAGE 47

* STREET NAME CHANGE
1729-2969
8-SEP-94

FOR COMPLETE ENG DATA SEE
ORIGINAL DEDICATION PLAT IN
BOOK 34, PAGE 94 OF RECORDS.